

KING EDWARD TIMES

HAPPY NEW YEAR!

VOLUME IV, No. 38

January 6, 1978

TO: All Faculty and Staff

DATE: December 28, 1977

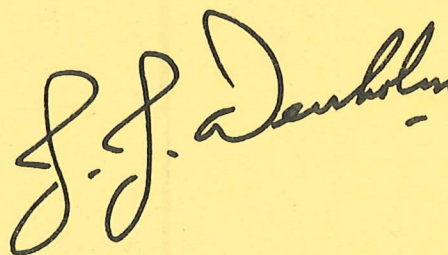
FROM: J.J. Denholm - Acting College Principal

SUBJECT:

Colleagues:

For me, each Christmas season is just a little more overwhelming than the Christmas before. In past years, for example, I have tried to be in touch with all within the College, either in person or by card, to wish each well for the season and for the New Year. This year I gave up trying ... almost! Regardless, the flow of good wishes from you to me did not diminish. It increased. Thank-you!

Belatedly, please permit me to wish you the best for 1978, and to thank all of you both personally and on behalf of the College Council and the students of the College for your past effort and commitment.



2) COLLEGE COUNCIL MEETING

The College Council meeting scheduled for Wednesday, January 11th, has been canceled.

H.E.P.

3) COLLEGES AND PROVINCIAL INSTITUTES ACT

Associate Deputy Minister A.E. Soles issued the following announcement on December 21st:

"Please note that a proclamation was issued by the Lieutenant-Governor in Council on December 15th, bringing into force sections 1 to 5, 9 to 31, 34, 44 to 68, 70, 71, 73, 74, 76 to 79, 81, and 84 to 86 of the Colleges and Provincial Institutes Act, chapter 67, S.B.C., 1977, as at that date."

H.E.P.

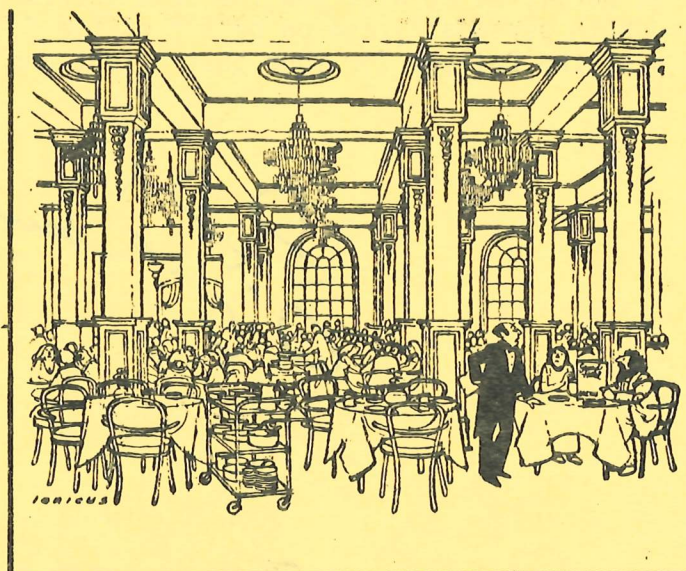
4) HOSPITAL CONSTRUCTION

I have just received advice from the General Hospital that construction of the Emergency addition is expected to begin shortly. "No Parking" signs will appear on Sunday night at entrances to the North East parking area. (They are already in place on the South East section). Parking in the area west of the new Laurel Street will not be affected - except that it will be in greater demand!

Grading, leveling, and blacktopping of the SE section of the campus is expected to begin in the near future and be completed within 3 months. Work on the parking area adjacent to our administration building will not likely commence until Spring.

Parking will be an even greater problem than it has been in the past. May I suggest that where possible and feasible you use public transit and that you urge your students to do likewise?

J.D.B.



"I'm afraid, sir, we don't do health food."

5) CONGRATULATIONS!

The following members were elected to our Executive, Directors, and Negotiating Committee at our Annual General Meeting in November (V.I.A.):

President:	Robert N. Brady	V.V.I.
Vice President:	Al Stusiak	K.E.C.
Treasurer:	John Griffith	K.E.C.
Secretary:	Wayne Bottlinger	K.E.C.
Directors:	John Ehwalt	V.V.I.
	Dave Greenall	K.E.C.
	Lucille Milligan	K.E.C.
	Roger Ofield	K.E.C.
	Roy Wren	V.V.I.
Negotiating Committee:	Ron Atkinson	V.V.I.
	Barbara Bowers	K.E.C.
	Dalton Kramer	V.V.I.
	Al Stusiak	K.E.C.
	Roy Wren	V.V.I.

A.S.

6) YEAR END PURCHASE REQUESTS

In order to avoid the same type of problems encountered last year with last minute requests for purchase of items in the General Operating Budget, the purchasing department would ask that all requisitions for items to be charged to the 1977-78 General Operating Budget be submitted by February 15, 1978. Requisitions dated prior to Feb. 15, 1978 can be assured to be transferred to purchase orders prior to April 1, 1978 and this guaranteeing the charges to the 1977-78 budget.

The purchasing department can not guarantee having purchase orders issued by March 31, 1978 if we are faced with the same "mad rush" as we were last year.

Your co-operating in submitting your requisitions before February 15, 1978 will guarantee your request to be charged against your 1977-78 budget.

Gary Reber
Purchasing Dept.

7) REASSIGNMENT OF DUTIES IN THE FINANCIAL SERVICES DEPARTMENT

There will be some reassignment of duties in this department. The major shift is that Mr. Z. Mandani will take over the position of Accounts Payable Supervisor, and Mrs. P. Descheneaux will become more involved in the development of a procedure manual.

In the past, enquiries have been directed to various members of the accounting department. I would appreciate it if, in the future, you would direct any enquiries to Mr. J. Ho.

John Vandenaeker
Director of
Financial Services

8) MILEAGE ALLOWANCE

The mileage allowance paid to employees who use their cars on College business has been unchanged for three years, plus. In the same period, costs of gasoline, automobiles and automobile insurance have increased significantly, in some instances, in excess of 50%. Effective January 1, 1978, the mileage allowance rates will be as follows:

Cars under 2600 lbs. - 20¢ per mile

Cars 2600 lbs. or over - 25¢ per mile

If the car is used more than 1000 miles per year on College business and, as a consequence, a 'business' insurance category is required, the College will reimburse the employee in the amount of the dollar differential between the 'business' category rate and the 'pleasure' category rate. The claim for reimbursement should be directed to the Director of Financial Services and be supported by a statement from the insurance agent setting out the differential.

The new rates are the maximum mileage allowances paid to employees of the Provincial Government, as established by the Treasury Board.

It should be understood clearly that a mileage allowance is not a fringe benefit. The allowance is intended to be reimbursement for out-of-pocket expenses.

J.D.B.

9) LIBRARY NEWS

For the past 7 or 8 months, Mary Anne Epp has been Acting Head Librarian at the Langara Campus. I have just received word that she will not be returning to our midst, but instead has accepted a permanent position at the Langara library, effective 1978 01 01. I know you will all join with me in expressing appreciation for all the work Mary Anne did at King Edward, particularly in development and improvement of library services.

We will miss you, Mary Anne, but wish you all the best in your new position.

J.D.B.

10) NANCY YILDIZ

It is with regret that the resignation of Nancy Yildiz as Night School Co-ordinator of English Language Training has been accepted, effective March 31, 1978. Nancy has been a co-ordinator for two years and, during her term of office, has accomplished many things: a new curriculum for Night School, new materials and many interesting workshops.

As many of you are aware, she has been dividing her attention between her night school duties and her position directing the special Summer English Language Programs for the Community Education Services of the College. Under her "directorship", the summer program has increased to the point where it requires more attention than she can spare from night school. We are not losing her totally; during the winter, she will be instructing a regular class at King Edward, but from April 1st to September 30th, she will be assigned to C.E.S. We know that, with her enthusiasm and good humour, she will make a success of her new enterprise and she "leaves" with our best wishes.

H.E.P.

11) MARVELLOUS!

Yesterday I was registering a French speaking student for Intermediate E.L.T. classes. He wanted to sign up for the "Improve Your Pronunciation" classes as well, so I took him along to meet Eva Williams who teaches Intermediate I.Y.P.

I met the student later and asked him how he had got on with Mrs. Williams. "Fine," was the reply. "She pronounce marvellously!"

A feather in your cap, Eva!

M.A.

12) MORE MOMENTS WITH METRIC!



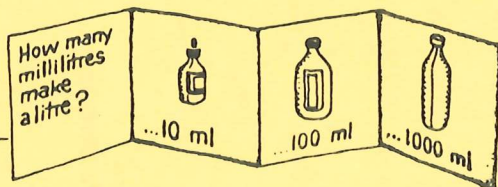
**Most things
that come
in litres
pour, splash
and spill.**

l
(litre)

Many products such as gasoline, paint, cooking oil, juices will be sold in litres. Milk containers in the range of 1 to 4 l could be the most common sizes for this product.

ml
(millilitre)

It takes 1000 ml to make 1 l. 5 ml is about a teaspoon. Metric kitchen measures come in millilitres.



Because conversion of the speedometer by inserting a gear in the speedometer drive also converts the odometer, there is potential for fraud if a future buyer of the car is not informed of the exact date and mileage when the conversion took place. It is an offence under section 27(1) of the Weights and Measures Act to alter or adjust an odometer in such a way as to give a false indication of the distance travelled by the vehicle.

A decal or sticker should therefore be placed on the dashboard, giving the true mileage at the time of conversion and the date of conversion. Manufacturers and distributors of speedometer conversion kits have agreed to include a suitable decal with their kits.

Pascal

The metric unit for pressure and stress is derived from the basic unit metre and the derived unit newton, $\text{Pa} = \text{N}/\text{m}^2$. The unit was named in honor of Blaise Pascal (1623-1662), a French mathematician and philosopher who determined the weight of air (barometric pressure) and is considered the founder of hydrodynamics. His research determined the physical laws of pressure or "Pascal's Law." Pascal began to master Euclid at the age of 12 and wrote essays on conic sections at 17, but from age 29 until his death 10 years later, religious speculation occupied his time almost exclusively.



Photo courtesy Smithsonian Institute

Brik



13) I.D. 102: ELEMENTS OF INSTRUCTION

This course, offered by the Centre of Continuing Education, U.B.C. will be offered at Vancouver Vocational Institute on the following Saturdays:

February	18, 25
March	4, 11, 18, 25
April	15, 22, 24
May	6

9:00 a.m. - 4:00 p.m.

Instructor: David Little, who normally teaches the course at U.B.C. during the summer.

Cost: \$95.00 - \$85.00 fee plus \$10.00 text and material fee.

If you intend to enrol in the course, please let me know as soon as is possible, no later than January 24, so that application forms and course material can be available far before the course begins.

I.D. 101 is ~~not~~ a prerequisite for I.D. 102; but I.D. 102 is a prerequisite for I.D. 103, "Techniques of Instruction."

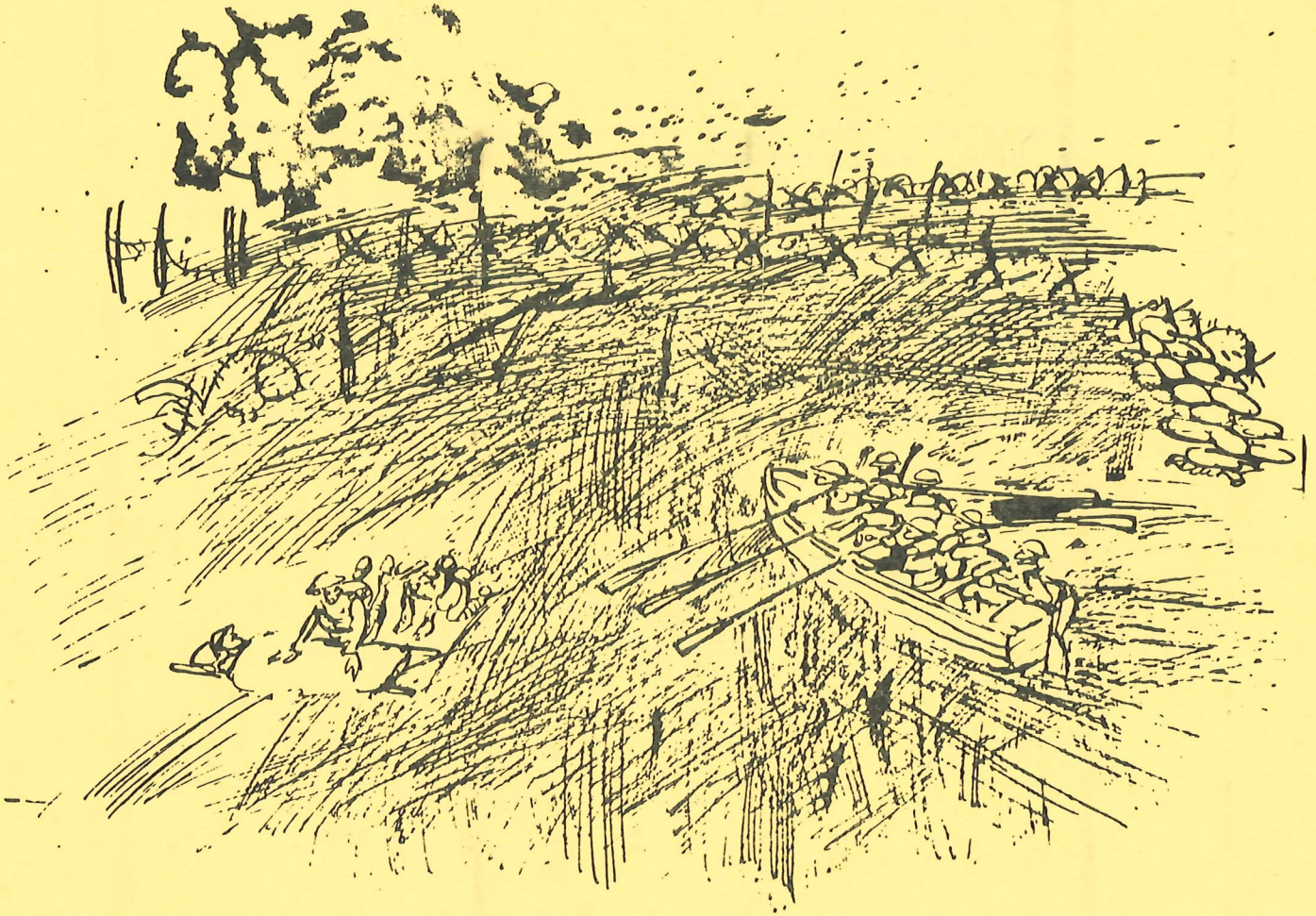
R.F.C.

14) SHORT COURSES FOR ADULT EDUCATORS

U.B.C.'s Centre for Continuing Education brochure, covering short courses for adult educators, is posted on the faculty bulletin board.

H.E.P.

'DIS IS DE PLACE'



"I hadn't realised the mud out there was as bad as that!"

VANCOUVER GENERAL HOSPITAL

VCC
KEZ Facilities
JWB

January 5, 1978.

For: GENERAL DISTRIBUTION
From: E.R. Carpenter, Associate Director, Planning

Re: LAUREL STREET PROJECT #1

Contracts have been awarded to Fownes Construction Co. Ltd and Standard General Construction (B.C.) Ltd for the excavation on the northerly portion of the former King Edward School site (present paved parking) and the construction of a parking lot on the balance of the same site. This means that the former school property between the new and old Laurel Streets will be closed to parking for approximately three months beginning Monday, January 9, 1978.

The old Laurel Street is now Hospital property and will continue to be used as a traffic entrance to the Emergency Department and its parking lot. Traffic will be one way off 12th Avenue and the 10th Avenue entrance will be permanently closed due to the excavation for the Laurel Street Project #1 (redevelopment for Emergency Department, Cardiac Monitoring Unit, Support Services and U.B.C. Academic area).

I am sorry that we are unable to provide alternative parking facilities during this initial phase of construction and request your sympathetic understanding at this time.



E.R. Carpenter.

