

JUNE  
24  
1993

# King Edward

Vol. 241  
June 24, 1993

## MENTAL FITNESS CORNER

### PUZZEL:

A kangaroo word is one that carries within its spelling a smaller word (in the correct order) which is a synonym (same meaning) for itself.

Example: INDOLENT contains IDLE. Can you find the synonyms hidden in the following words?

1. nourished
2. instantaneously
3. assured
4. variegated
5. amicable
6. lineage
7. exhilaration
8. fatigues
9. boundaries
10. facetiousness

### TRIVIA:

Why do the English drive to the left?

### ANSWERS FOR LAST WEEK'S SUBMISSIONS

#### PUZZLE:

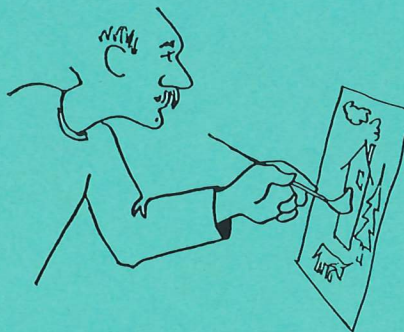
1. evil
2. tutor
3. soiled

4. ruin
5. revered
6. lies
7. whims
8. eats
9. skill
10. faces

### TRIVIA:

Legally a tomato is a vegetable. Horticulturally a tomato is a fruit because it is a berry.

Wayne Ko



I will be off painting next week from July 2, 1993 until July 9, 1993. If you have any building services problems, please contact the Director of Financial Services, Brant Wasney, at local 7015 or wait until I return on July 12, 1993.

Jay Strachan

VANCOUVER  
COMMUNITY  
COLLEGE







# THE LEARNING CENTRE

## July Workshops for KEC Students



<u>WORKSHOP</u>	<u>DATE</u>	<u>TIME</u>	<u>ROOM</u>	<u>TUTOR</u>
<i>Grammar - Int./Adv.</i>	<i>Monday</i>	<i>11:00-12:00</i>	<i>3125</i>	<i>Michael</i>
<i>C.B.C. Radio News</i>	<i>Tuesday</i>	<i>11:00-12:00</i>	<i>3125</i>	<i>Karen</i>
<i>Pronunciation</i>	<i>Thursday</i>	<i>11:00-12:00</i>	<i>3125</i>	<i>Michael</i>
<i>Headline News</i>	<i>Thursday</i>	<i>2:30- 3:30</i>	<i>3077</i>	<i>Dan</i>
<i>C.B.C. Television News</i>	<i>Friday</i>	<i>12:00- 1:00</i>	<i>3126</i>	<i>Karen</i>
<i>Writing-Int. &amp; Adv.</i>	<i>Friday</i>	<i>2:30- 3:30</i>	<i>3077</i>	<i>Dan</i>

## *A Note of Appreciation to Faculty Members in the ESL Division*

*On behalf of the TESL Certificate students I would like to thank those members of faculty who agreed to sponsor a student teacher this term. Our students have expressed their appreciation for the time and effort given them during their practicums in the ESL Division. The positive and supportive teaching environment provided by the VCC sponsor teachers was very much appreciated by all the TESL Certificate Students.*

*Jennifer House*

*The following faculty members in the ESL Division sponsored a student teacher during the Spring term.*

### *ESL Outreach Department*

*Jane Forward  
Arlene Howard  
Tim Lee  
Nancy Moore  
Nan Poliakoff  
Margaret Stefanowicz-Piwonski  
May Yip*

### *ELS Department*

*David Aquila  
Patrick Hamill  
Bobbie Olgetree*

### *ESL Vocational Department*

*Margit Arthur  
Joan Cawsey  
Patricia Hernandez  
John Kostoff  
Maeva Lightheart  
Virginia Monk  
Dan Rieb  
Candice Slattery  
Janet Theny  
Michael Webb*



The United Nations Association in Canada  
Trans-Canada Freire Literacy Tour

Paulo Freire  
Ana Maria Freire  
at UBC

July 15th 1993

10:00-11:30

Developments in Freirian Literacy Theory  
Seminar in the Department of Language Education, Pon E, Rm 102,  
led by Carl Leggo

1:00-3:00

Literacy and the United Nations Year of the  
Indigenous People  
Panel Discussion in the Great Hall of the University of  
Learning  
Sherrilyn Calliou (Chair)  
with JoAnne Archibald and

Sponsored by  
Centre for the Study of Adult and Instructional  
Administrative, Language Education  
Language Education  
Social and Cultural Studies  
Visual Arts  
Office of International Studies  
Office of Programs and Research  
Dean's Office

The Freires will also be presenting at the Carnegie Literacy Center at  
Main and Hastings (July 13th) and the Faculty of Education at Simon  
Fraser University (July 14th).

## POSITIONS OPENING

### City Centre

Food Services Cashier, Food Services Support Department. Closing date: July 07, 1993.

### Miscellaneous

Public Service Commission of Canada has notified us that Electronic Technicians (EL) position are available. Closing date: June 30, 1993. For more information, please check the Staff Job Posting Board in 4th Floor Administration.

Associate Director (Administrative Services), Continuing Education. Closing date: June 25, 1993.

## INTEROFFICE ENVELOPES

The Mailroom requires interoffice envelopes. If you have any extras in your area, please deliver them to the mailroom.

Thank you.

